

Plan of Installation

ALFANO systems on HONDA : CBR1000RR



- A) Installation of the magnetic sensor (gauge) A-242
- B) Installation of the speed sensor A-246
- C) Installation of the RPM amplifying A-451
- D) Installation of the ALFANO

A) Installation of the magnetic sensor (gauge) A-242

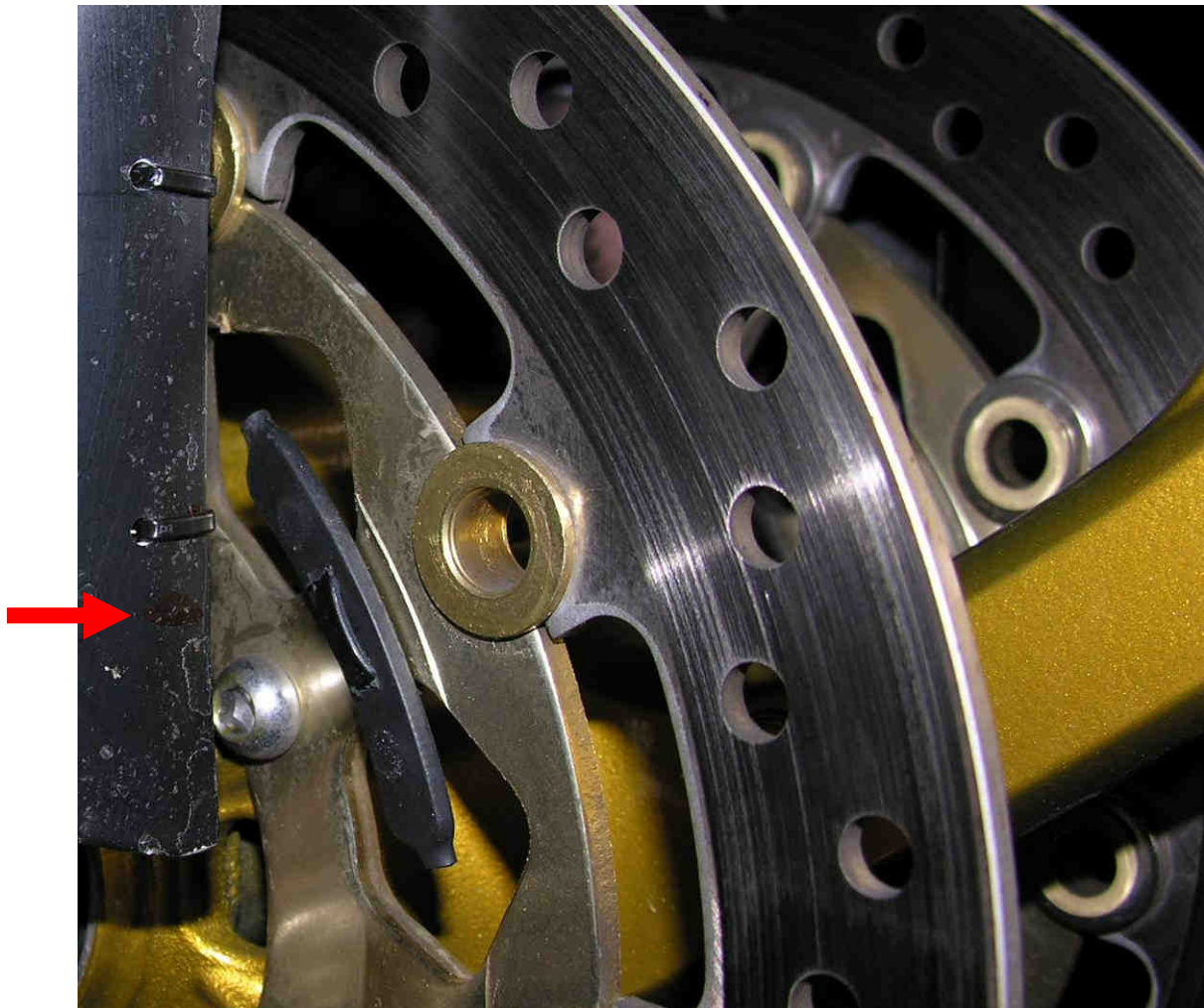


- If the sensor doesn't start to the passage on the magnetic field, use one or several spacers to bring the sensor closer to the ground.
- When fixing the cable with nylon tighten-cables, take care to move this one most possible away of the exhaust.



B) Installation of the speed sensor A-246

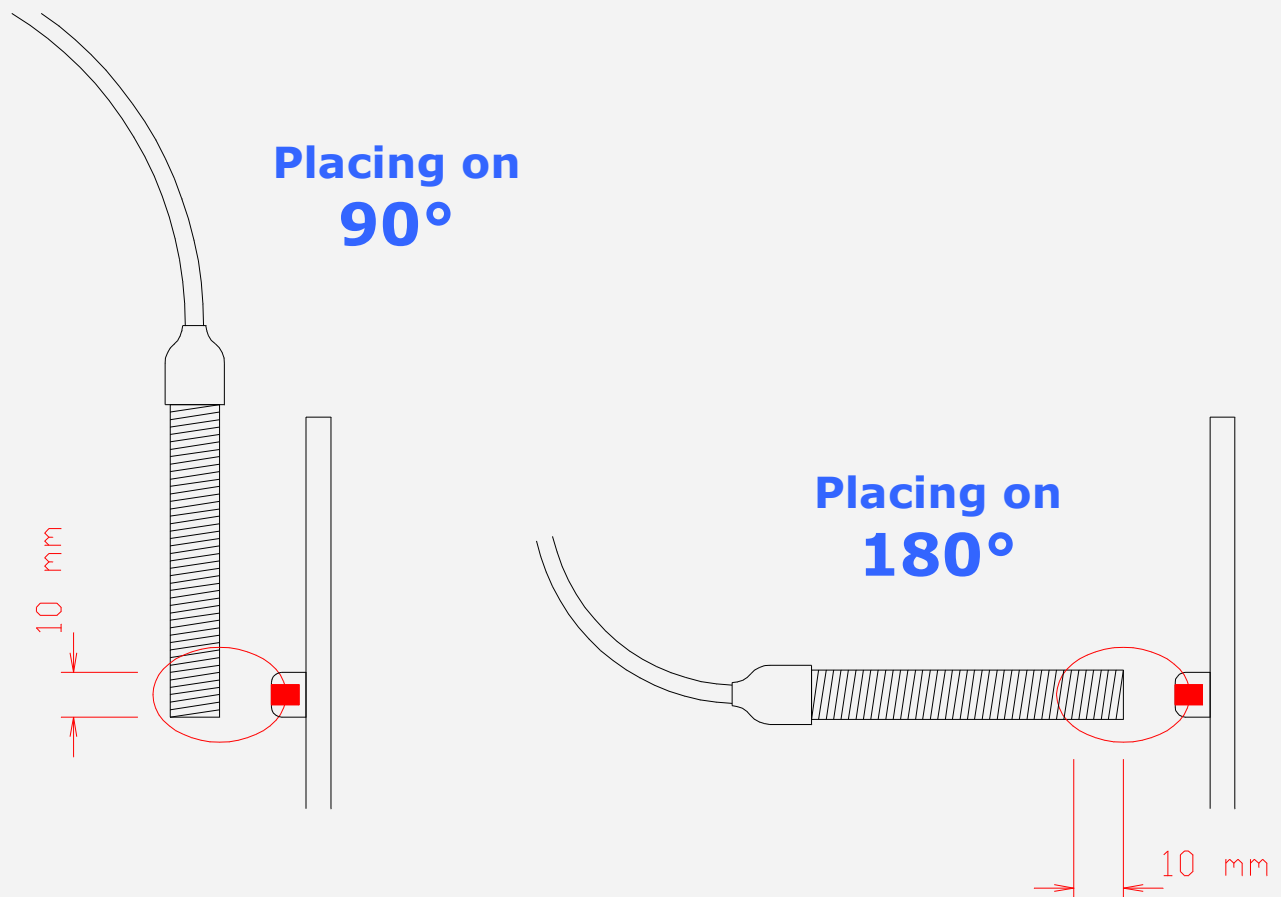
- Fix the magnetic support (supplied) on one of the arms of the disc brake support with a nylon tighten-cable (see photos). Fix it on the narrowest part of the arm.



- With a scorer, draw a feature on the mudguard in front of the magnetic support.

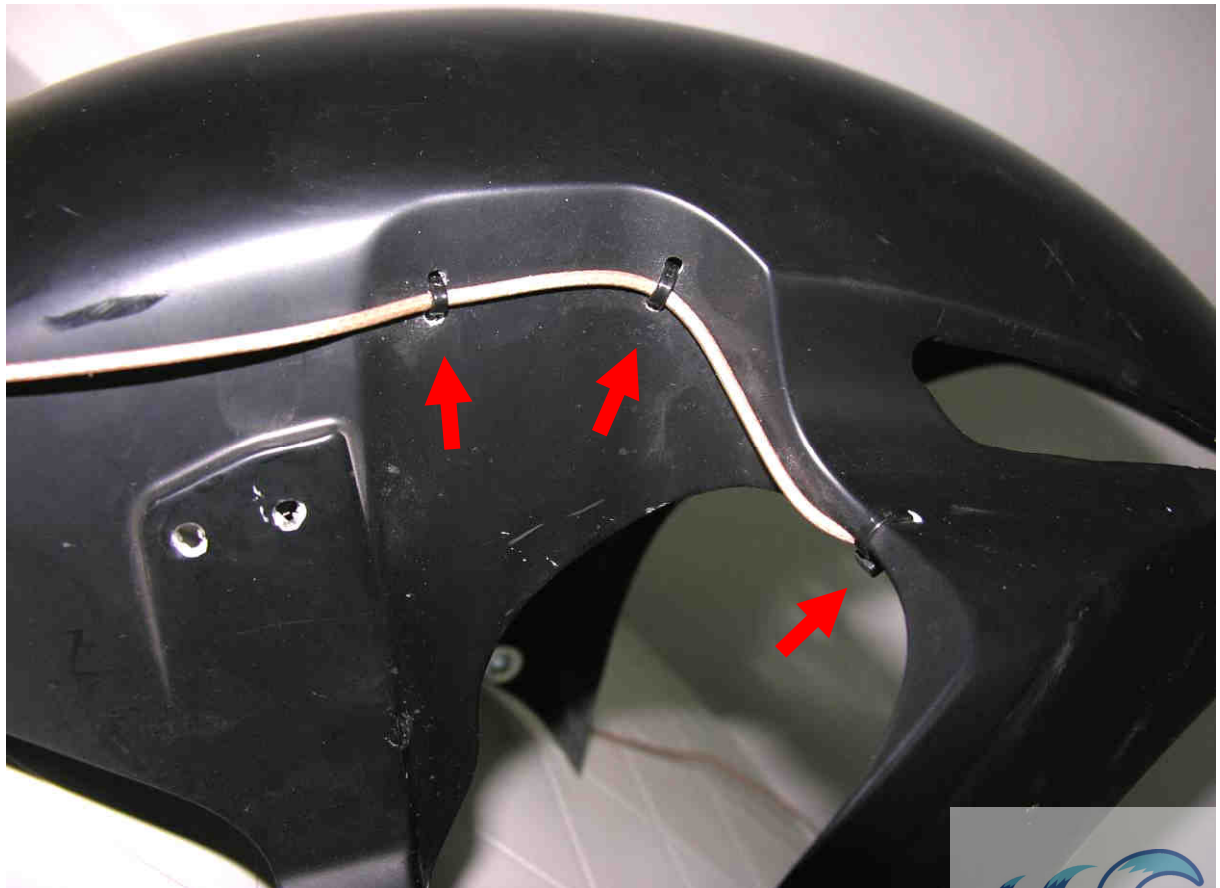
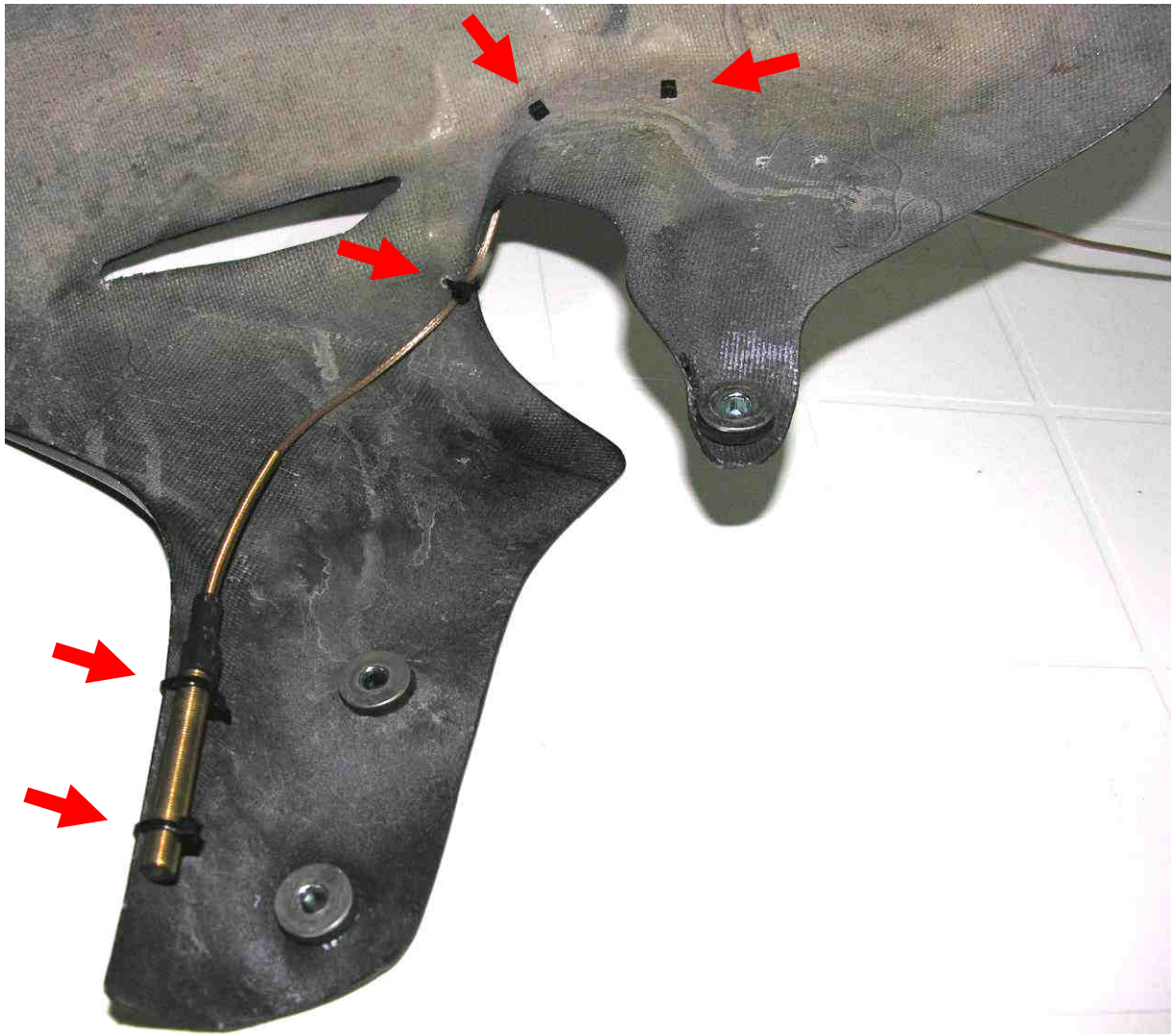
For an optimal working, it is IMPORTANT to determine the position of the sensor in relation to the magnetic support.

The speed sensor can get settled in 90° and 180° in relation to the magnetic support.

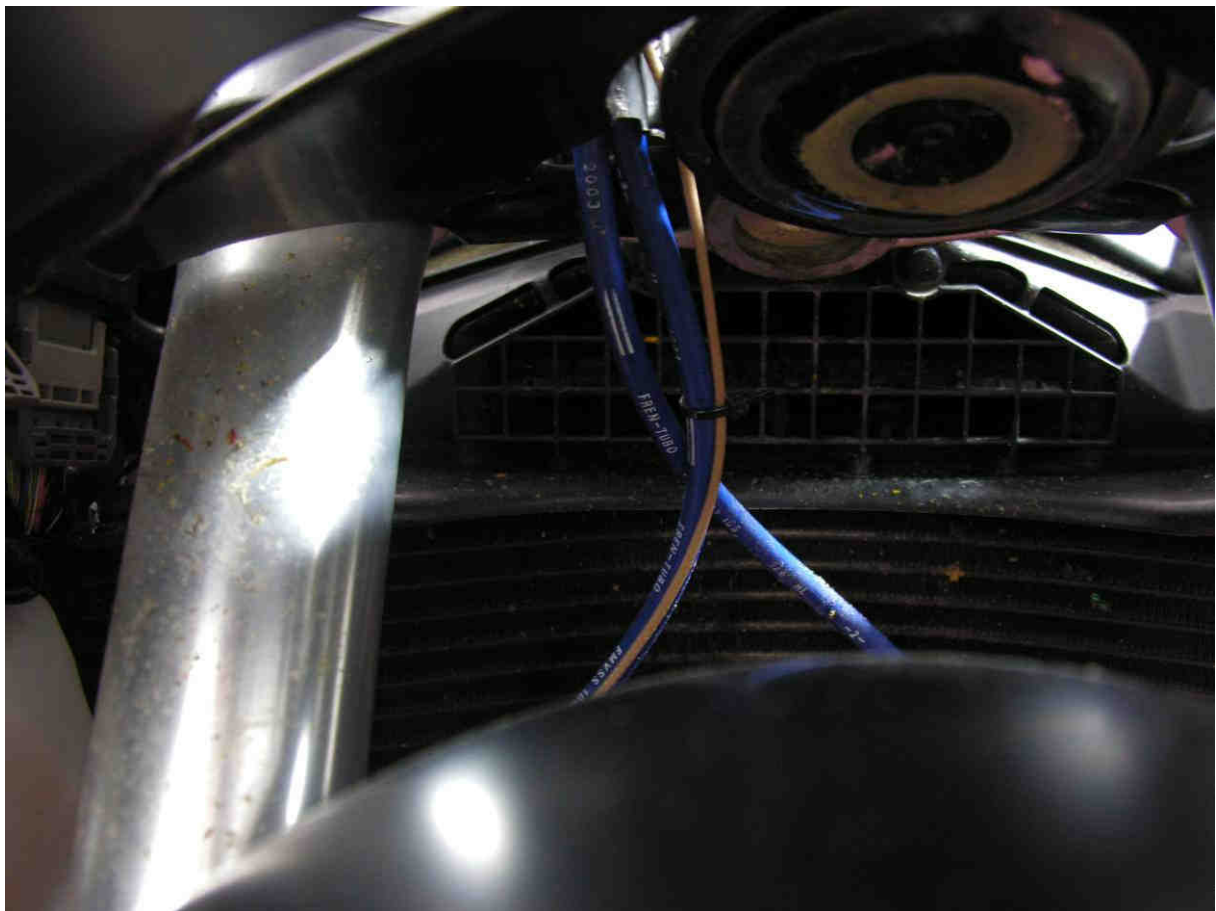
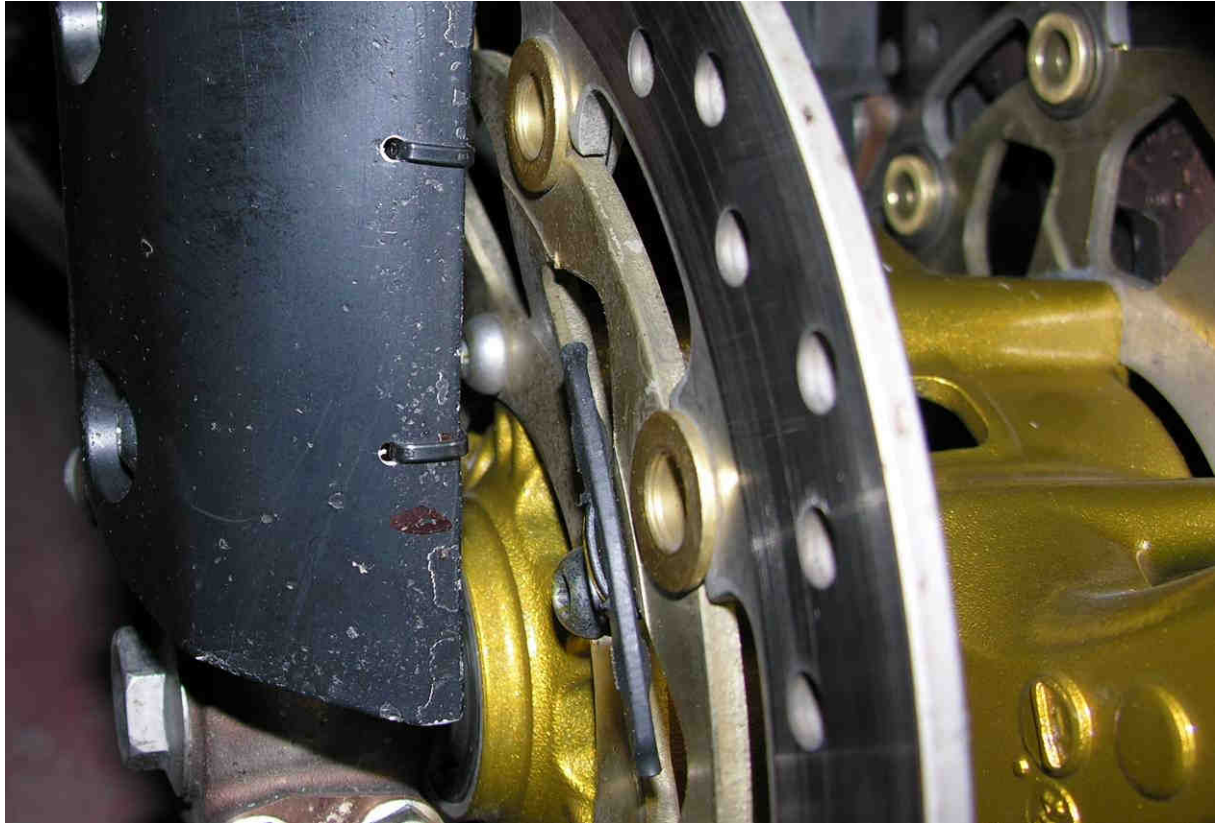


Only the tip of the sensor must be influenced by the magnetic support.

- In this case, install the speed sensor to « 90° ».
- Put down the mudguard and fix the speed sensor and its cable with nylon tighten-cables. For that to make, pierce holes of diameter 3mm (to see photos).

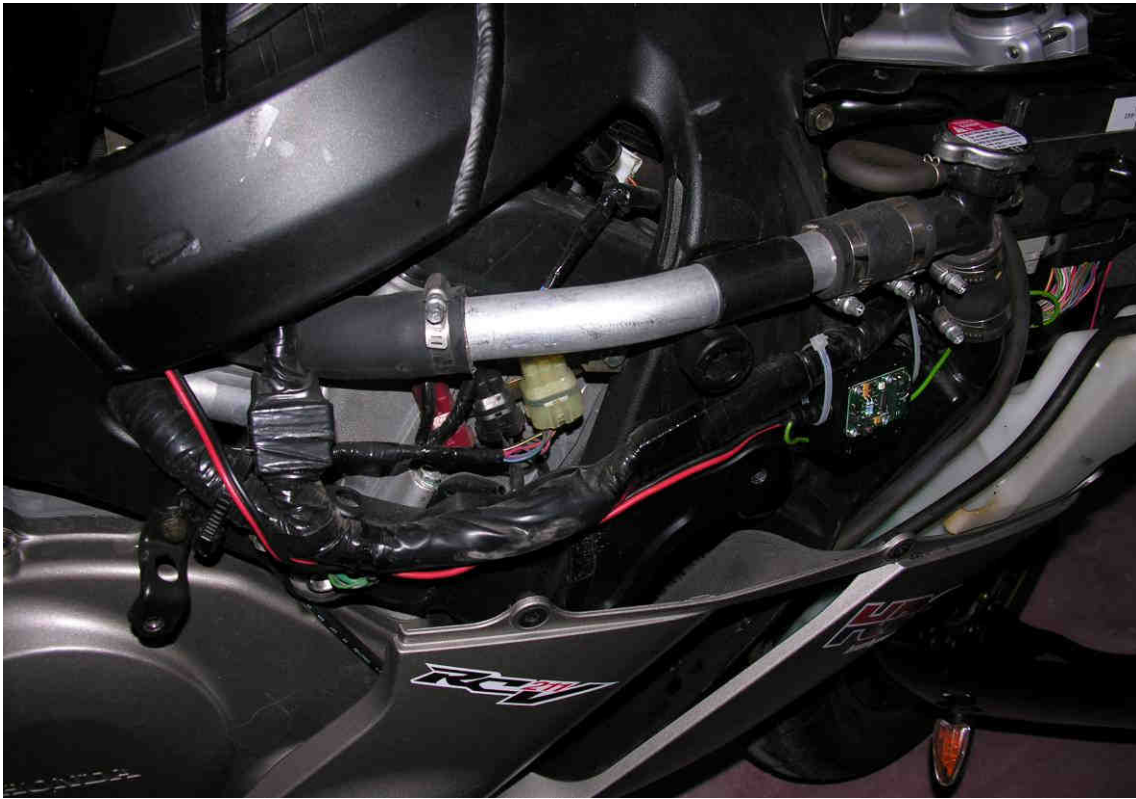


- The 2 holes to fix the sensor must be made to +/- 10mm of the side.

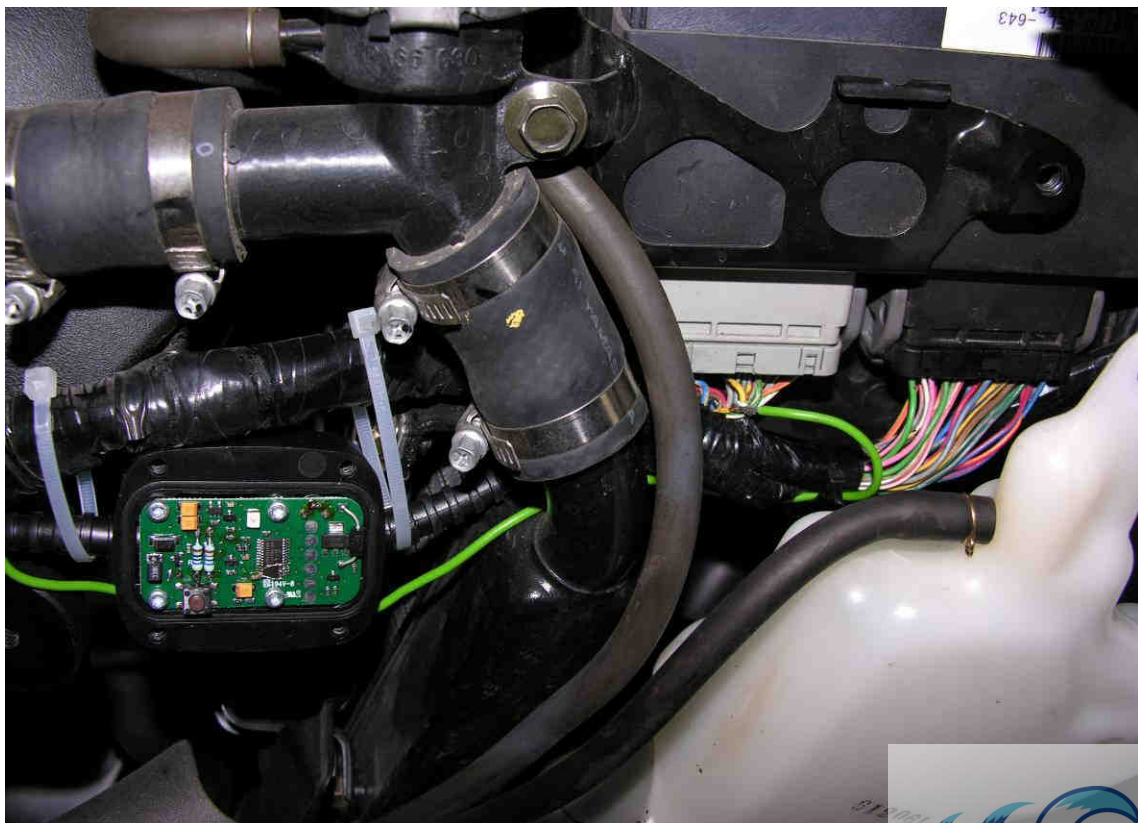


C) Installation of the RPM amplifying A-451

- Put down the seat and the right superior careening of the motorcycle.

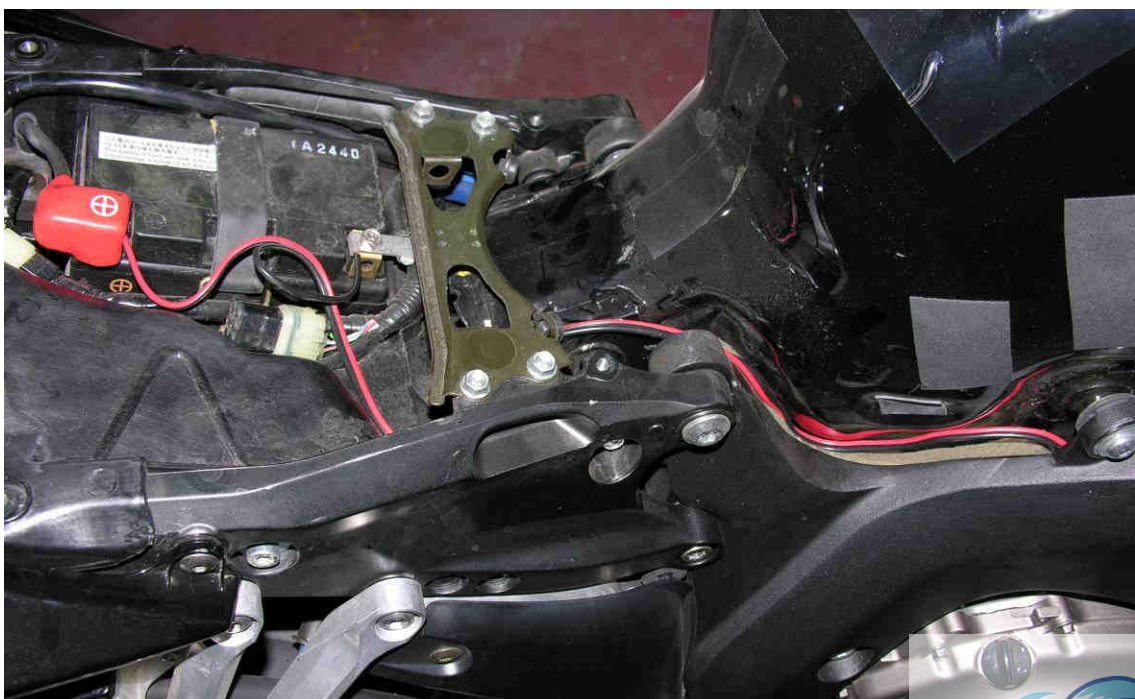


- Place the RPM amplifying A-451 (see photo).



The RPM amplifying A-451 has 4 leads, 3 on one hand and 1 on the opposite side.

- Pull the two feeders « Red + Black » put side by side in direction of the battery toward the rear of the motorcycle and connect them to (+) and (-) of the battery with the protective fuse.

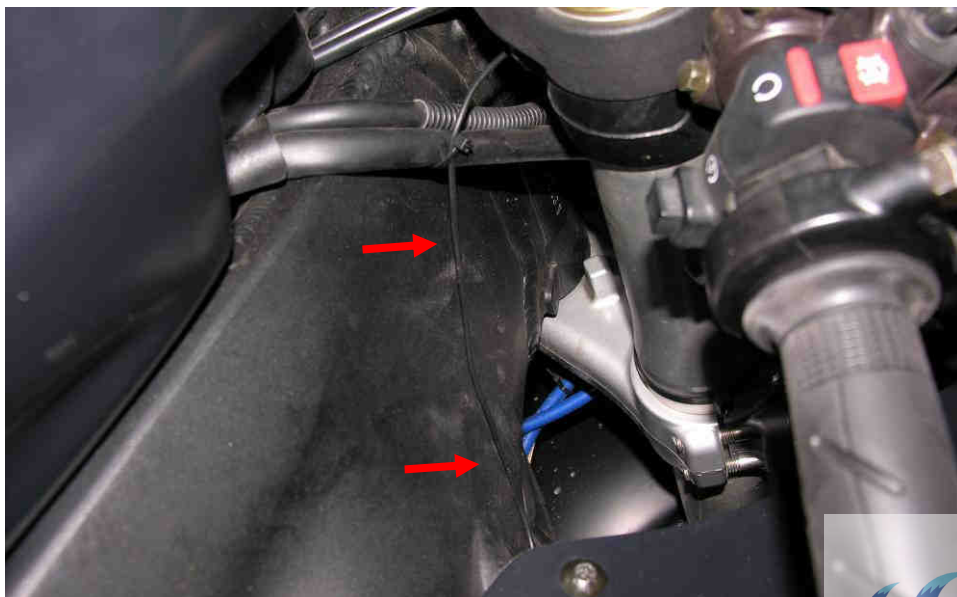




- Pull the « Green » lead of the A-451 in direction of the two thick connectors toward the right.

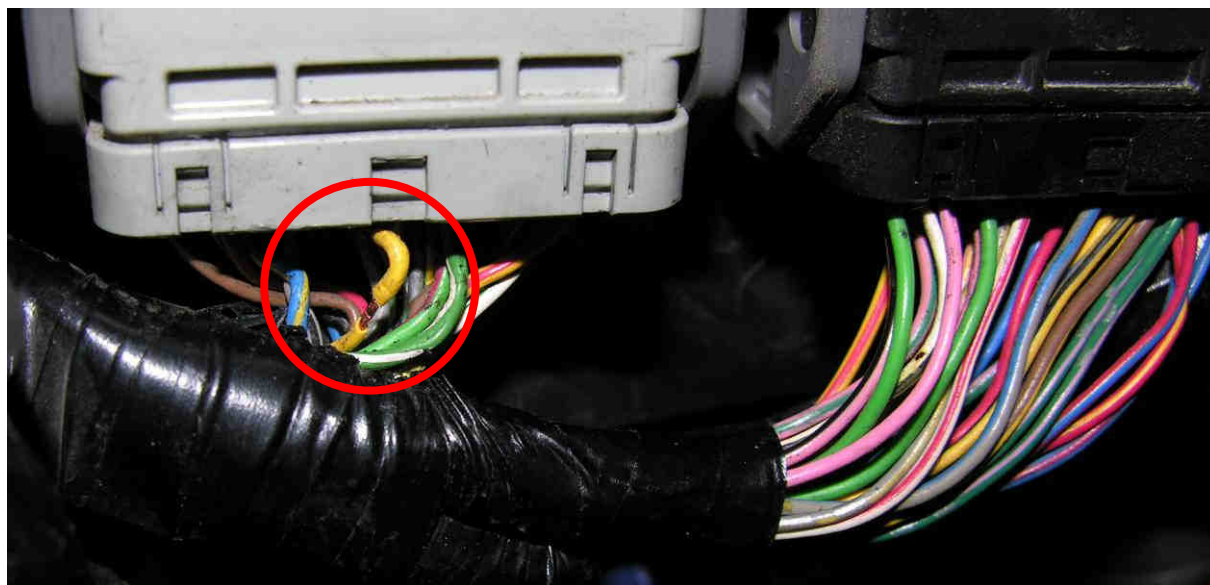


- Pull the « Black » lead of the A-451 (RPM signal output) to the ALFANO.



The RPM signal feeder provided by the electronic case of the motorcycle that is necessary to the RPM amplifying A-451, will be either of color « Yellow » either « Yellow-Green ».

- Mark this lead in the exit of the thick grey connector.



- Before denuding this lead to come to connect the « green » lead of the A-451, make sure it is the right one. We counsel you to do a test while connecting the « green » lead of the A-451 on this lead with the help of a needle. For it, prick a needle in the center of this lead and come to twist the « green » lead of the A-451 on the extremity of this needle for so to provoke the electric contact between these two leads. Start the engine and check :

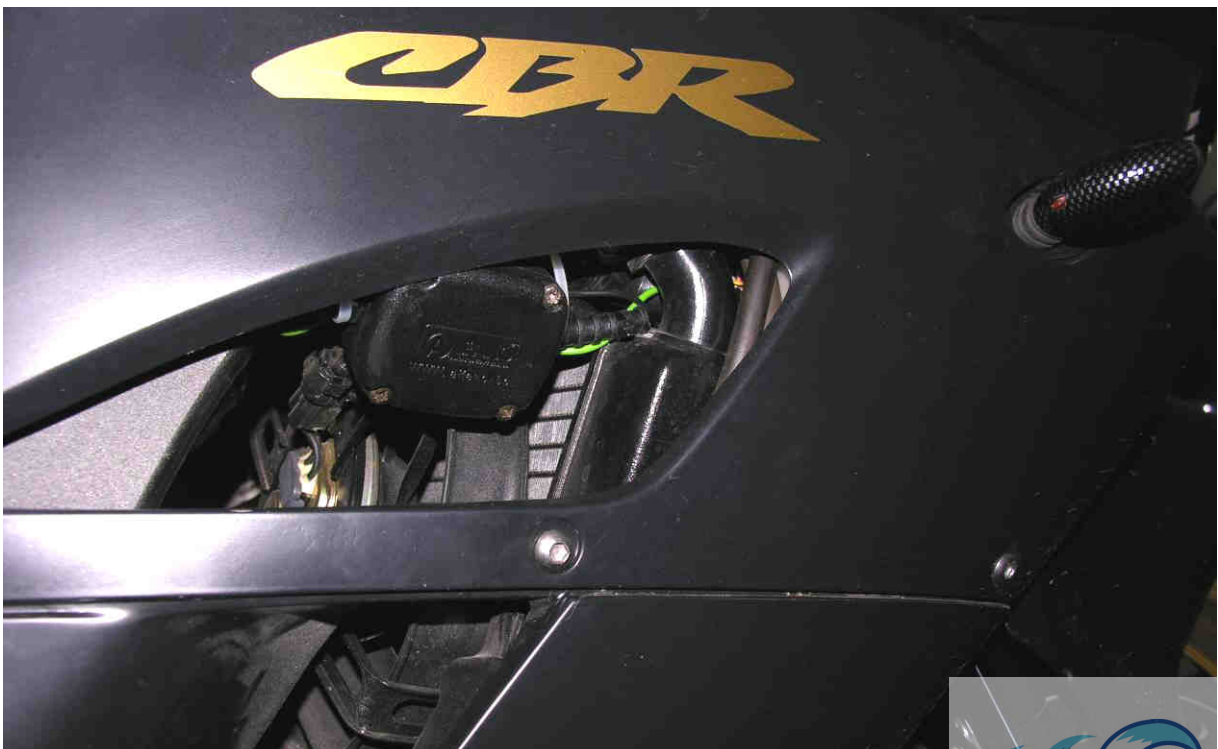
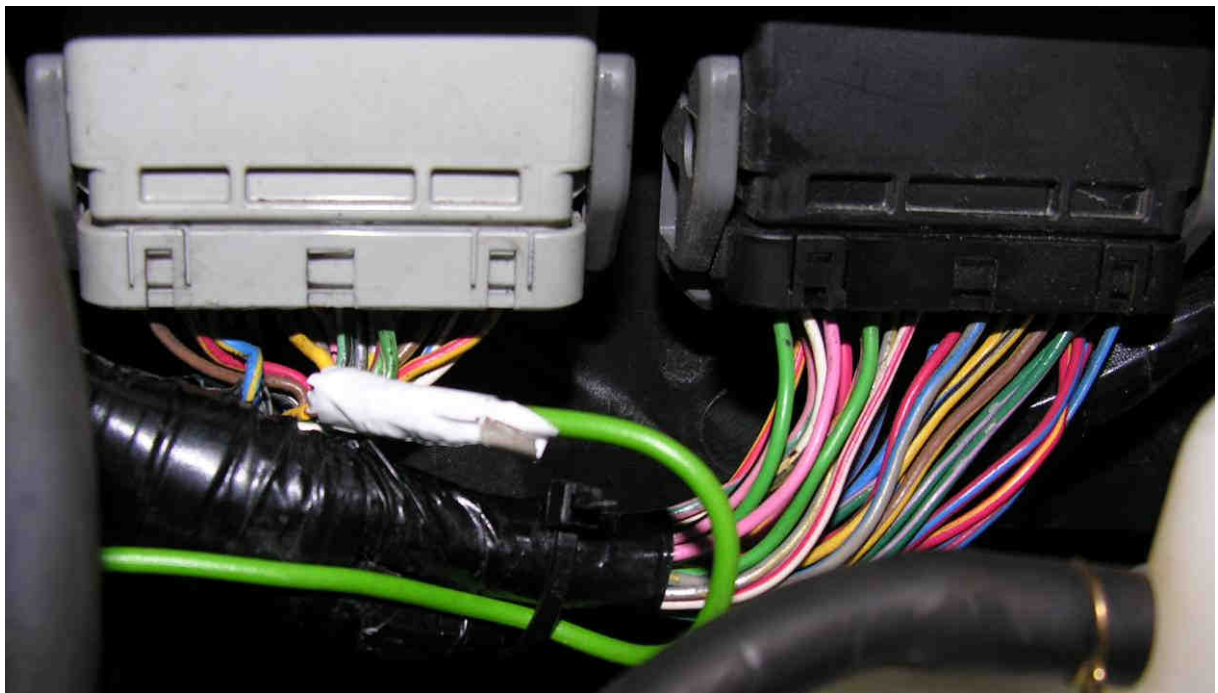
1) if the small witness lamp of the amplifying A-451 ignites.

2) the RPM on the ALFANO.

- It is necessary to parameter the amplifying A-451 and the ALFANO to get the RPM correctly. For it, consult the manuals of these devices.
- The right lead marked thus, denude it with care (see photo above) and come to twist the « green » lead of the A-451 in definitive way (see photo below).



- Don't forget to correctly isolate the leads with the insulating adhesive strip.

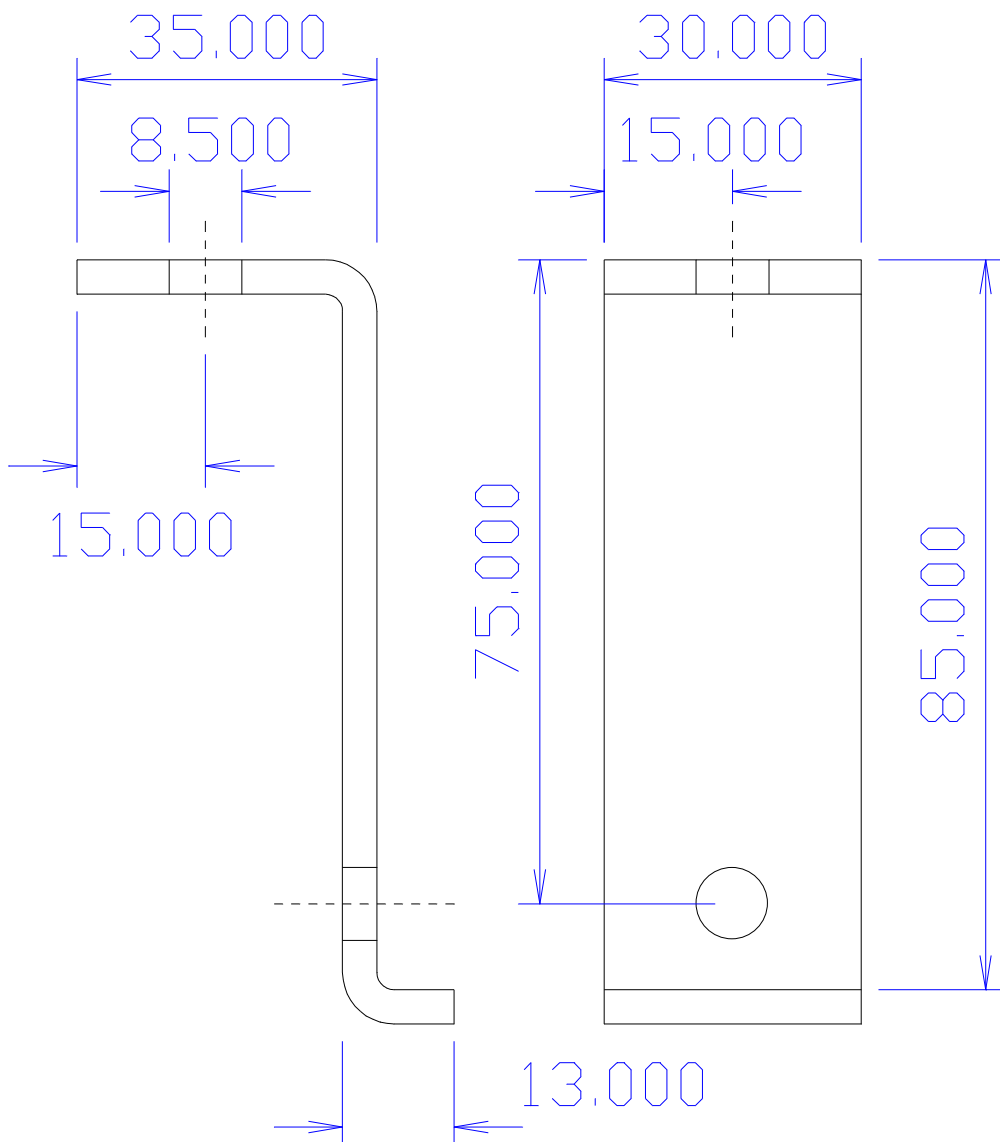


D) Installation of the ALFANO

- First of all, it is indispensable to manufacture a support.



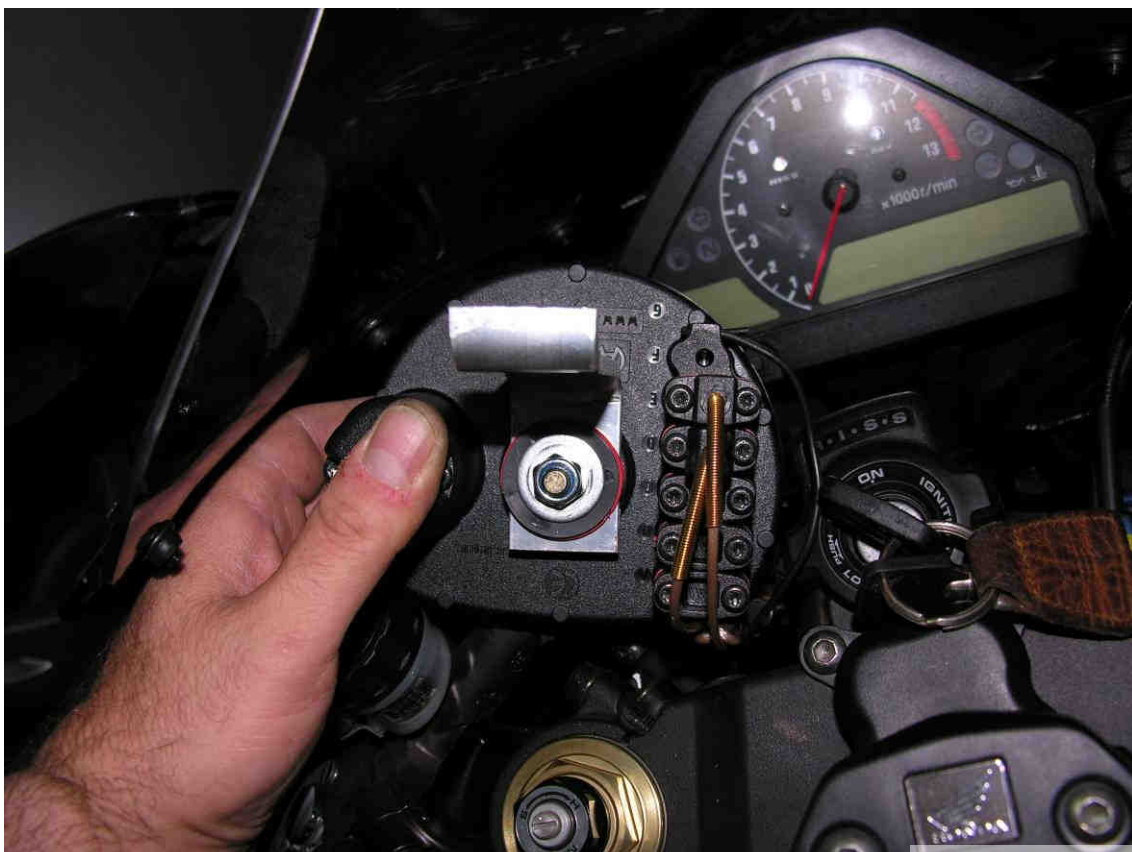
- Use a flat rod of :
 - 30mm X 4mm in aluminum or
 - 30mm X 3mm in steel



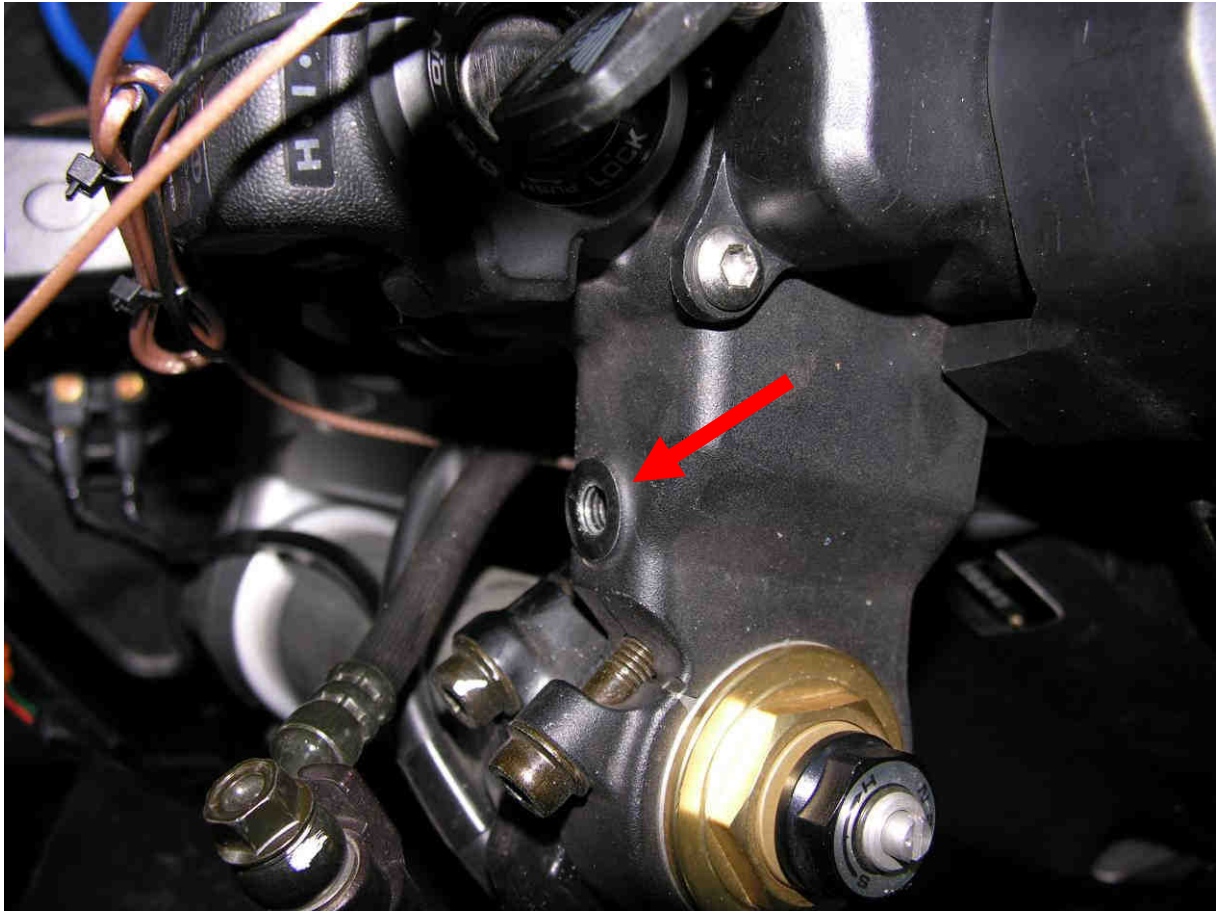
- Fix the support on the ALFANO



- Plug the sensors at the rear of the ALFANO



- On the handlebar, you will find a threaded hole (see photo). Fix the support with a 8mm metric screw to this place.





www.alfano.com